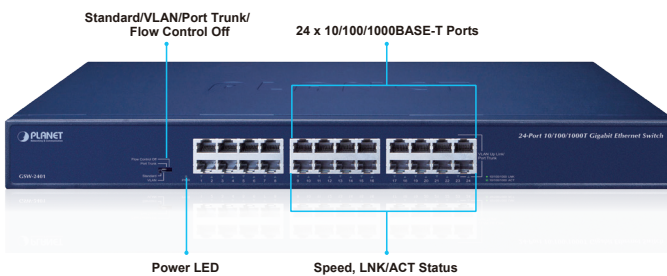
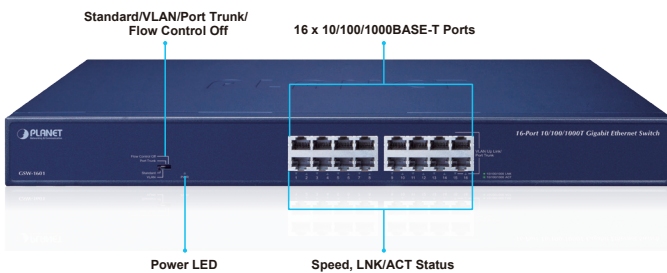


16-/24-Port 10/100/1000BASE-T Gigabit Ethernet Switch



Cost-effective Gigabit Solution for Enterprise Backbone and Data Center Networking

PLANET GSW-1601 and GSW-2401 Gigabit Ethernet Switches provide 16/24 RJ45 10/100/1000Mbps ports for high-speed network connectivity. They can automatically identify and determine the correct transmission speed and half/full duplex mode of the attached devices with their 16/24 Gigabit ports that support 9K jumbo frame feature. Therefore, the GSW-1601 and GSW-2401 can handle extremely large amounts of data transmission in a secure topology linking to a backbone or high-power servers.



GSW-1601 Physical Port

- 16 10/100/1000BASE-T Gigabit Ethernet ports
- Supports auto MDI/MDI-X function

GSW-2401 Physical Port

- 24 10/100/1000BASE-T Gigabit Ethernet ports
- Supports auto MDI/MDI-X function

Layer 2 Features

- Complies with IEEE 802.3, 10BASE-T, IEEE 802.3u 100BASE-TX, IEEE 802.3ab 1000BASE-T Ethernet standards
- Features Store-and-Forward mode with wire-speed filtering and forwarding rates
- Integrated address look-up engine, supporting 8K absolute MAC addresses
- 9K jumbo packet support
- Power saving ability for Green networking
- IEEE 802.1Q VLAN packet transparency support
- IEEE 802.3x flow control for full duplex operation and back pressure for half duplex operation
- Hardware-based 10/100BASE-TX, half/full duplex and 1000BASE-T full duplex mode, flow control and auto-negotiation
- Automatic address learning and address aging
- Supports CSMA/CD protocol

Hardware Features

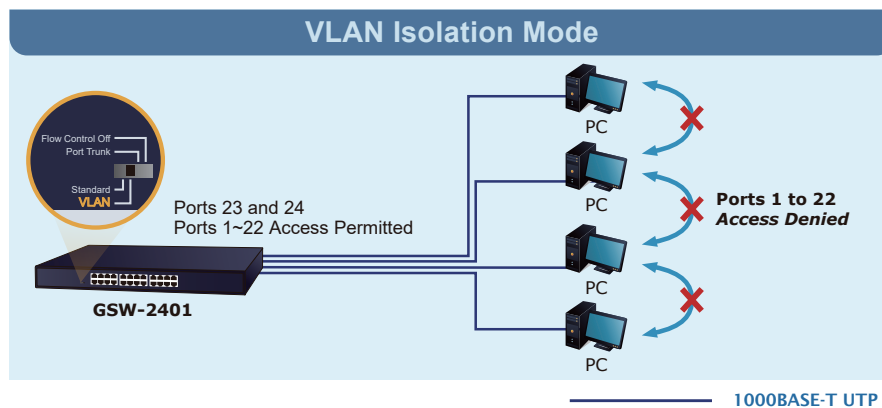
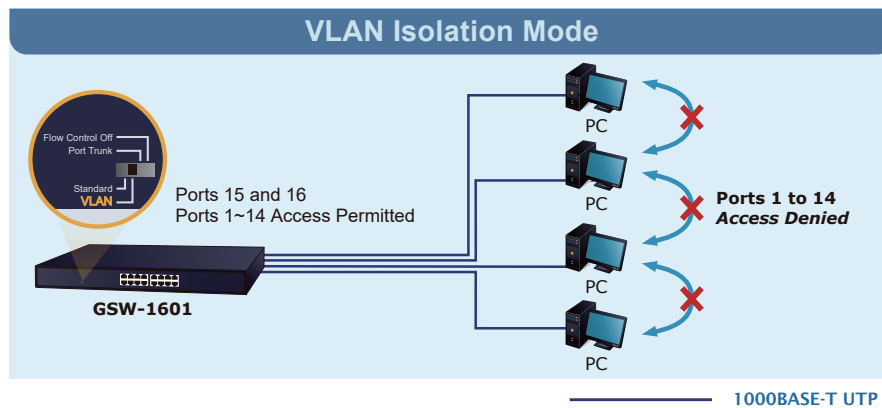
- 100~240V AC, 0.15A, 50~60Hz universal power input (GSW-1601)
- 100~240V AC, 0.22A, 50~60Hz universal power input (GSW-2401)
- DIP switch for standard/VLAN/Port Trunk/flow control off mode selection
- FCC, CE class A compliant

DIP Switch for Operation Mode Selection

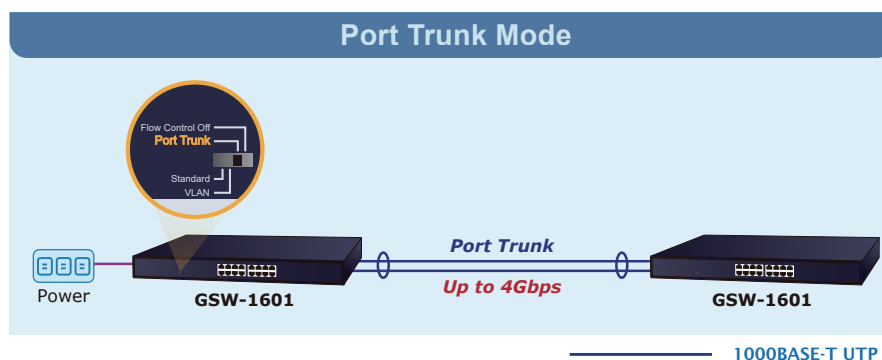
The new GSW-1601 and GSW-2401 offer “Standard”, “VLAN”, “Port Trunk” and “Flow Control Off” modes. The GSW-1601 and GSW-2401 operate as a normal Gigabit Ethernet Switch in the “Standard” operation mode.

DIP Switch Mode	Function	
Standard (default)	This mode makes the GSW-1601 and GSW-2401 operate as a general switch and all ports operate at 10/100/1000Mbps auto-negotiation.	
VLAN	This mode makes the GSW-1601 operate as a VLAN isolation switch and 1. Port 1 to port 14 will isolate respectively. 2. Port 1 to port 14 can only communicate with port 15 and port 16 (uplink port).	This mode makes the GSW-2401 operate as a VLAN isolation switch and 1. Port 1 to port 22 will isolate respectively. 2. Port 1 to port 22 can only communicate with port 23 and port 24 (uplink port).
Port Trunk	This mode makes the GSW-1601 operate as a Trunk switch and port 15 to port 16 will act as Trunk ports.	This mode makes the GSW-2401 operate as a Trunk switch and port 23 to port 24 will act as Trunk ports.
Flow Control Off	This mode disables the GSW-1601 and GSW-2401 flow control function.	

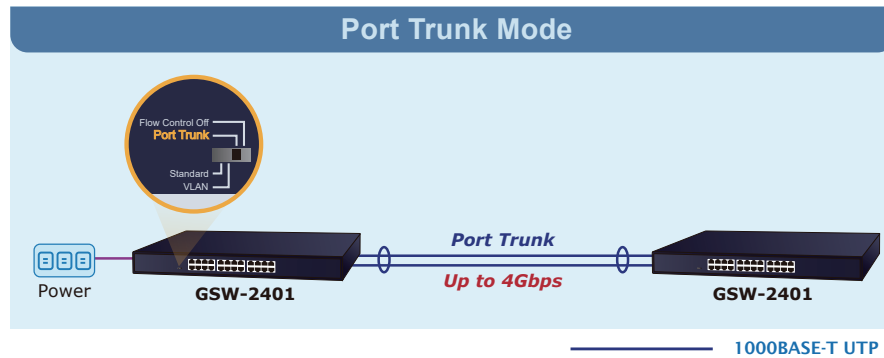
The “VLAN” operation mode features port-based VLAN function that can help to prevent the connected clients’ multicast or broadcast storm from influencing each other.



In the “Port Trunk” operation mode, the GSW-1601 forces aggregated ports 15 and 16 to be a trunk group.



In the "Port Trunk" operation mode, the GSW-2401 forces aggregated ports 23 and 24 to be a trunk group.



High Performance

The GSW-1601 and GSW-2401 provide a high-performance switch architecture that is capable of providing the non-blocking switch fabric and wire-speed throughput as high as 32/48Gbps, which greatly simplifies the tasks of upgrading the LAN for catering to increasing bandwidth demands. Besides, the Flow Control function of the GSW-1601 and GSW-2401 enables routers and servers to directly connect to the Switch for fast and reliable data transfer.

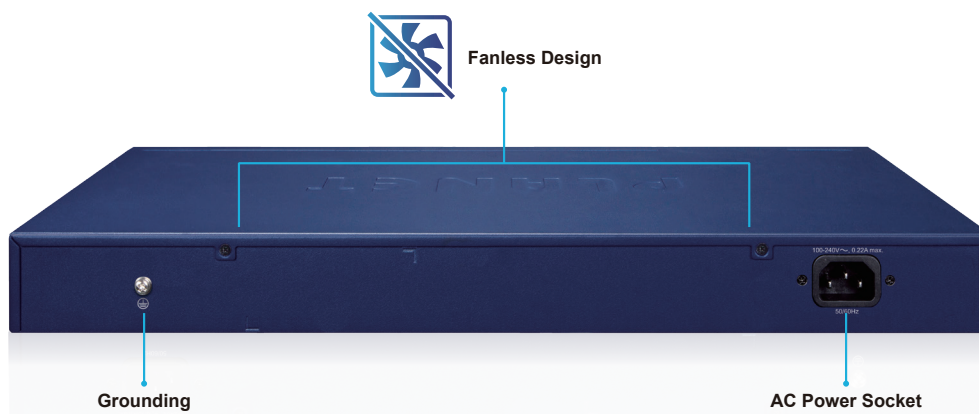
All the RJ45 copper interfaces of the GSW-1601 and GSW-2401 support 10/100/1000Mbps auto-negotiation for optimal speed detection through RJ45 Category 6, 5 or 5e cables. They also support standard for auto-MDI/MDI-X that can detect the type of connection to any Ethernet device without requiring special straight or crossover cables.

Excellent Traffic Transmission

The GSW-1601 and GSW-2401 support Store-and-Forward forwarding scheme to ensure low latency and high data integrity, which eliminates unnecessary traffic and relieves congestion on critical network paths. With an intelligent address recognition algorithm, the GSW-1601 and GSW-2401 recognize up to 8K different MAC addresses. The high data throughput and 32/48Gbps internal switching fabric make it ideal for most Gigabit environments, especially when network is upgraded to a Gigabit environment.

Fanless Design

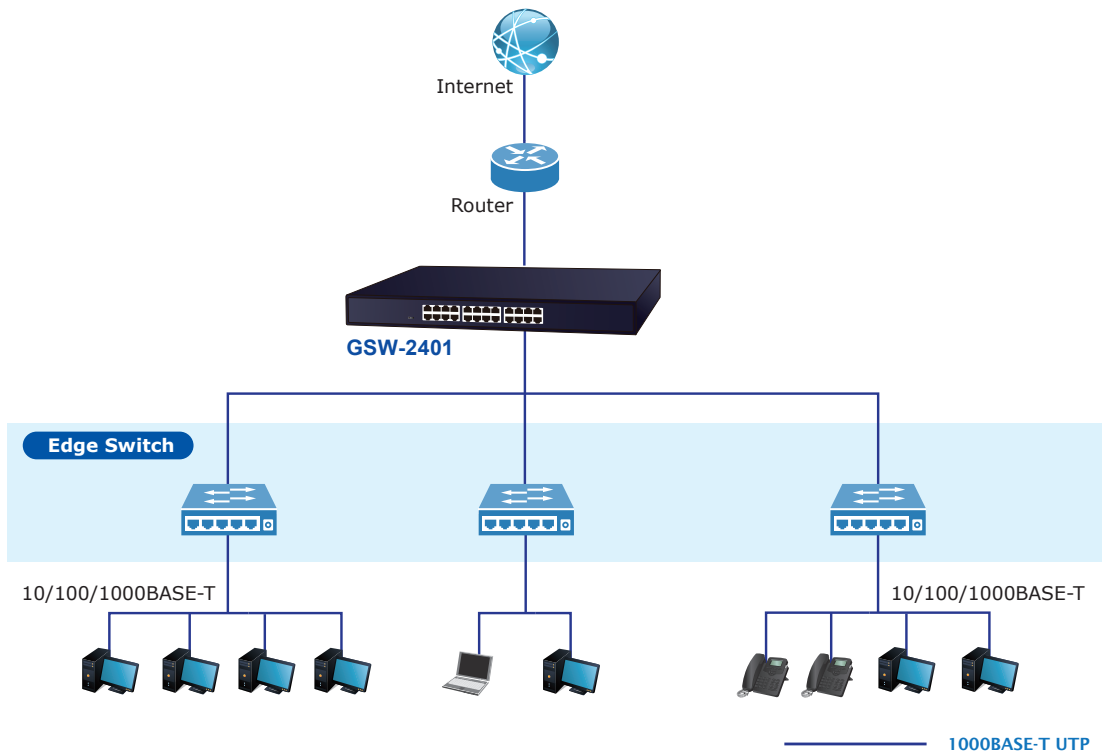
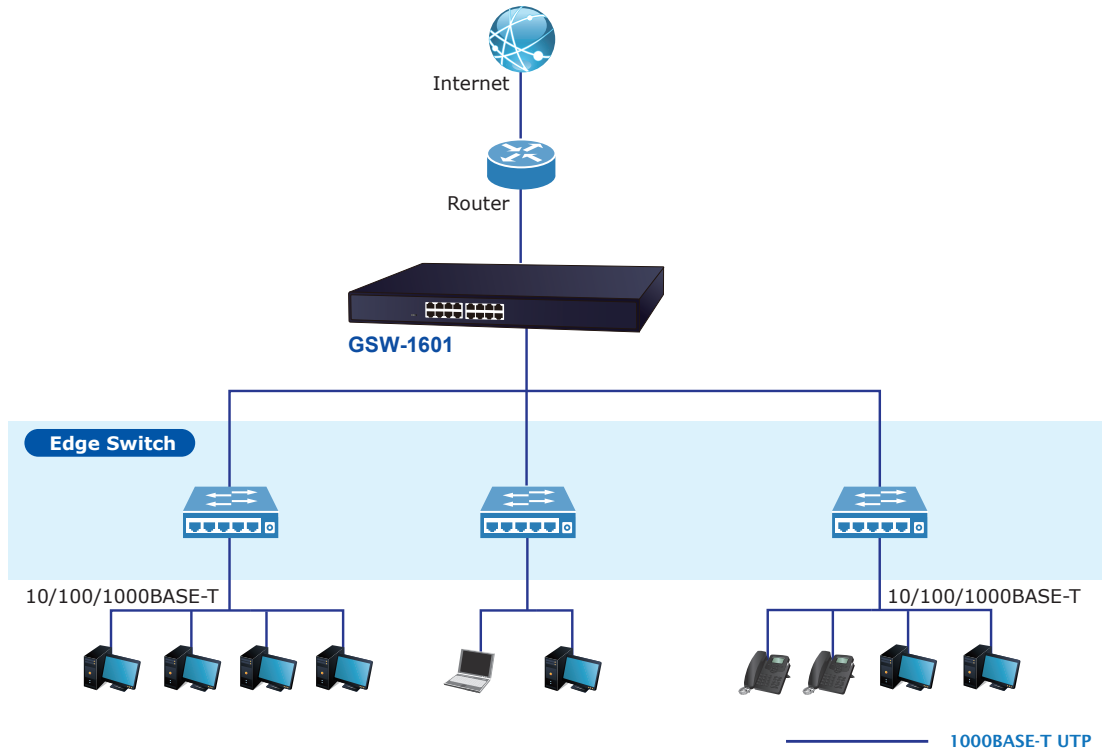
With its good ventilation design, the GSW-1601 and GSW-2401 are able to operate all along without a fan, thus reducing substantial power consumption and creating a noiseless environment. The GSW-1601 and GSW-2401 are definitely the best choice for any working environment without affecting their performance.



Applications

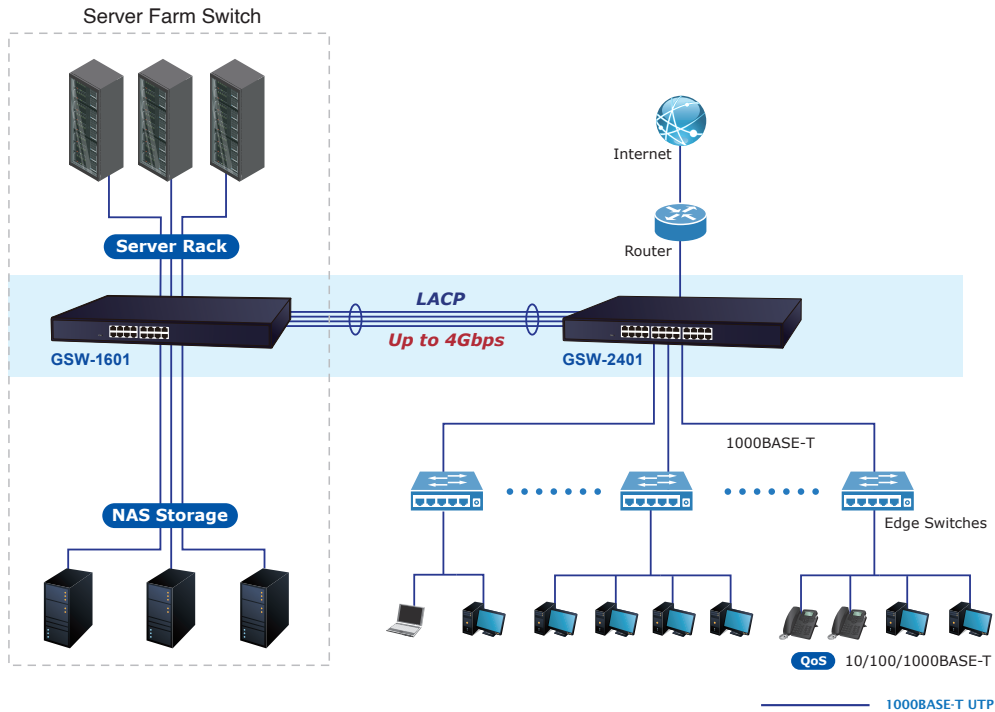
Backbone Switch

With up to 32/48 Gigabits per second of non-blocking switch fabric, the GSW-1601 and GSW-2401 can easily provide high bandwidth for both today's and future requirements.



Server Farm Switch

Providing 16/24 Gigabit Ethernet ports, the GSW-1601 and GSW-2401 are ideal to be used as a server farm switch connecting to your servers and powerful desktops.

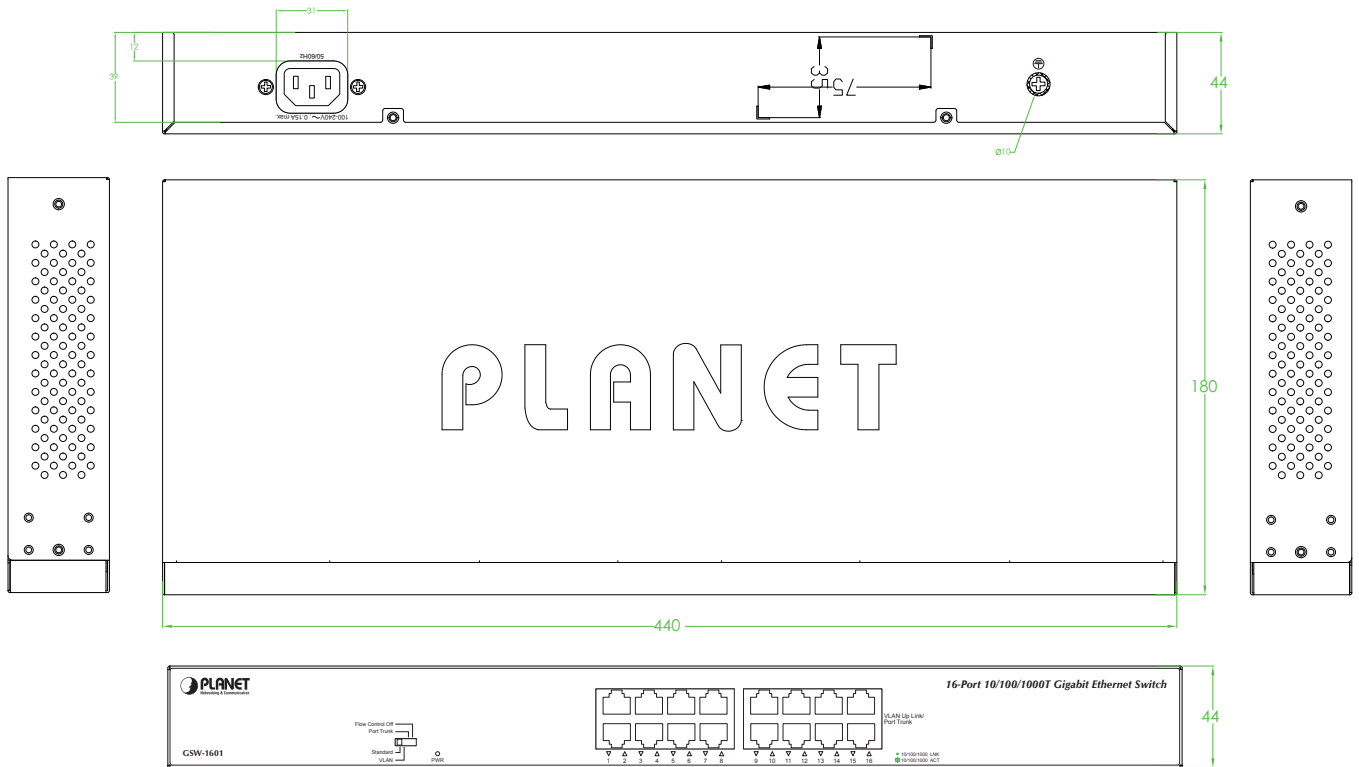


Specifications

Product	GSW-1601	GSW-2401
Hardware		
Hardware Version	10	10
10/100/1000BASE-T MDI/MDIX Ports	16	24
DIP Switch	Operation mode selection ■ Standard ■ VLAN ■ Port Trunk ■ Flow control off	
Weight	1.6kg	1.7kg
Power Consumption/Dissipation	7.6 watts/25 BTU	10.8 watts/36 BTU
Power Requirements	100~240V AC, 0.15A, 50-60Hz	100~240V AC, 0.22A, 50-60Hz
Dimensions (W x D x H)	440 x 180 x 44mm, 1U height	440 x 180 x 44mm, 1U height
Switching		
Switch Processing Scheme	Store-and-Forward	
Throughput (packet per second)	23.8Mpps	35.7Mpps
Switch Fabric	32Gbps	48Gbps
Address Table	8K entries	8K entries
Jumbo Packet Size	9K	9K
Flow Control	Back pressure for half duplex IEEE 802.3x Pause frame for full duplex	Back pressure for half duplex IEEE 802.3x Pause frame for full duplex
Standards Conformance		
Regulatory Compliance	FCC Part 15 Class A, CE	
Standards Compliance	IEEE 802.3 (Ethernet) IEEE 802.3u (Fast Ethernet) IEEE 802.3ab (Gigabit Ethernet) IEEE 802.3x (Full-Duplex Flow Control) IEEE 802.3az Energy Efficient Ethernet (EEE)	
Environment		
Operating	Operating Temperature: 0~50 degrees C Relative Humidity: 5% to 95% (non-condensing)	
Storage	Temperature: -10~70 degrees C Relative Humidity: 5% to 95% (non-condensing)	

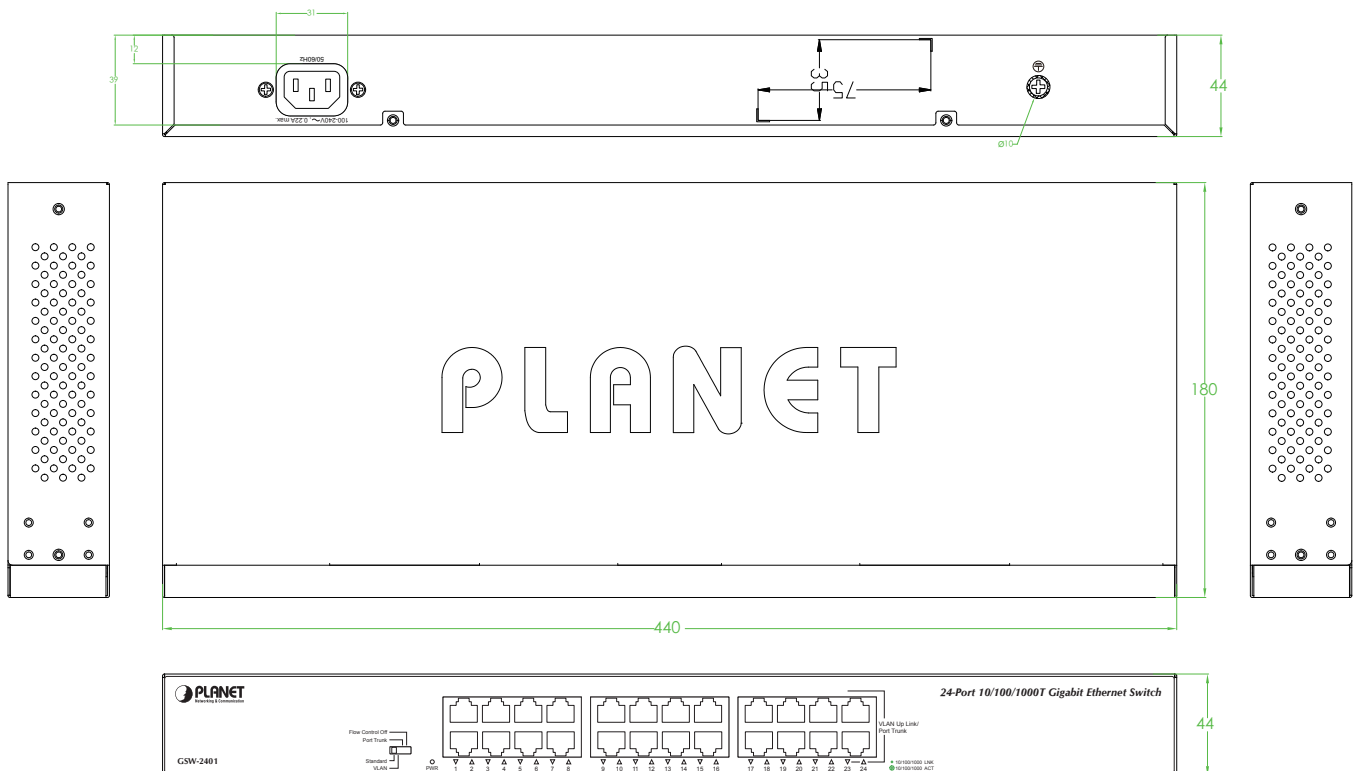
Dimensions

■ GSW-1601



Unit: mm

■ GSW-2401



Unit: mm

Ordering Information

GSW-1601	16-Port 10/100/1000BASE-T Gigabit Ethernet Switch
GSW-2401	24-Port 10/100/1000BASE-T Gigabit Ethernet Switch

PLANET Technology Corporation

11F., No.96, Minquan Rd., Xindian Dist., New Taipei City 231,
Taiwan (R.O.C.)

Tel: 886-2-2219-9518

Email: sales@planet.com.tw

Fax: 886-2-2219-9528

www.planet.com.tw



PLANET reserves the right to change specifications without prior notice. All brand names and trademarks are property of their respective owners. Copyright © 2023 PLANET Technology Corp. All rights reserved.

GSW-1601/GSW-2401